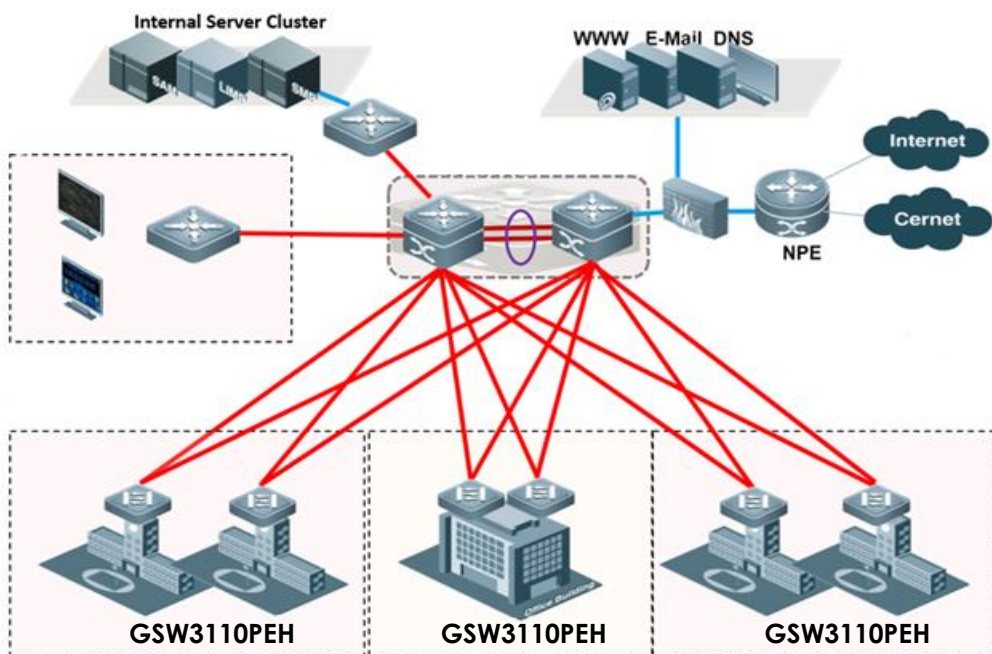




Features

- 20GBPS CAPACITY
- POE/POE+ SUPPORT
- HIGH POE POWER CAPABILITY
- STRONG QOS
- COMPLETE SECURITY FEATURE SET
- STATIC ROUTING SUPPORT
- IPv4/IPv6
- SIMPLE MANAGEMENT

Access POE Ethernet Switch



Description

The UTStarcom's GSW3110PEH is a cost-efficient Gigabit Ethernet switch designed for high security, performance and energy efficiency.

The product delivers full Gigabit access capabilities and offers large table capacity, fast hardware processing performance and improved operation experience. The GSW3110PEH provides support of PoE/PoE+ on all downlink ports.

Multiple mechanisms are available to maintain stable and reliable network operation. The 802.1D, 802.1w and 802.1s Spanning Tree Protocols guarantee fast convergence and improve fault tolerance. Ethernet ring protection mechanism implements link

recovery with switchover time <50ms. In-Service Software Upgrade (ISSU) ensures uninterrupted data forwarding during system upgrade.

Various protection mechanisms are implemented to enable high level of security and uninterrupted operation. The product implements level-based packet scheduling and packet protection that prevents DoS-/TCP-related SYN Flood, UDP Flood, Broadcast Storm or large traffic attacks. It supports storm/multicast/unicast limiting that ensures normal operation in complex network environment. The product supports port isolation within the same VLAN, DHCP-Snooping, and IP + MAC + Port binding. Further protection is

achieved through various authentication mechanisms including IEEE 802.1x, and Radius, as well as multi-level CLI protection, enabling different levels of management privileges to users.

The switch supports variety of features to enable simple and easy system management and maintenance, including: SNMP V1/V2/V3, RMON, Syslog, Telnet, SSH2.0. Administrators can use web management for easy installation and operation, and TFTP for configuration upload/download.

Thanks to its environment-friendly design, the GSW3110PEH offers low power consumption and quiet work environment.



Product Details

SYSTEM

Dimensions	330 × 230 × 45mm WxDxH
Power supply	AC input: 100V to 240V AC, 50Hz±10%
Power consumption	<30W
PoE Power	240W
Lightning Protection	2KV (POE port and power supply)
Operation temperature	0 °C to 50 °C
Storage temperature	-20 °C to 70 °C
Operation humidity	10% to 90% non- condensing
Storage humidity	5% to 95% non- condensing

MANAGEMENT

Management Ports Management	1 console port Console Telnet SSH2.0 HTTP/HTTPS SNMP v1/v2/v3 TFTP RMON Syslog
------------------------------------	--

Technical Specifications

PORT CAPACITY

Interface	Number of ports
10/100/1000BASE-T	8
1000Base-X ports combo with another 2 10/100/1000Base-T ports	2

PERFORMANCE

Backplane	20Gbps
Packet Forwarding Rate	15Mpps
RAM	128MB
Flash	16MB
MAC Address	8K
VLANs	4K

PoE

IEEE802.3af and 802.3at power supply standard
Hot restart and POE non-stop power supply
Configuration of electric port priority (when the power is inadequate)

SECURITY

L2/L3/L4 ACL flow identification and filtration
DDoS attack prevention, TCP's SYN Flood attack prevention, UDP Flood attack prevention, etc
Broadcast/multicast/unknown unicast storm-control
Port isolation
Port security, and "IP+MAC+port" binding
DHCP Snooping and DHCP option 82
IEEE 802.1x authentication
Radius authentication
Level-based command line protection

RELIABILITY

Static/LACP link aggregation
EAPS and ERPS
ISSU uninterrupted system upgrade

SWITCH FEATURES

VLAN	4K VLAN GVRP QinQ Private VLAN
Spanning Tree Protocols	802.1d STP, 802.1w RSTP, 802.1s MSTP. BPDU protection, root protection, and loopback protection
MAC exchange	Static configuration and dynamic MAC learning MAC browsing and removal Configurable aging time of the MAC address Limited number of learnable MAC addresses MAC filtration
Jumbo frame	9K
IPv4 Routing	Static route
IPv6 Features	ICMPv6, DHCPv6, ACLv6 and IPv6 Telnet, MLD snooping Flow classification based on L2-4 protocols
QoS	CAR flow limit 802.1P/DSCP priority re-labeling SP, WRR, and "SP+WRR" Congestion avoidance mechanisms like Tail-Drop and WRED Flow monitoring and flow shaping
Multicast	IGMP v1/v2/v3 IGMP Snooping IGMP Fast Leave Multicast group strategy and quantity limitation Multicast flow copying over VLANs
Port Mirroring	Support